



# TORNADO

Surface Mounted 52 W Etanj LED Luminaire



Order Code : 3359380  
Product Code : TRD 052U 400D00 8K4 150 66 HE ELP

## Product Data

### Standard Features

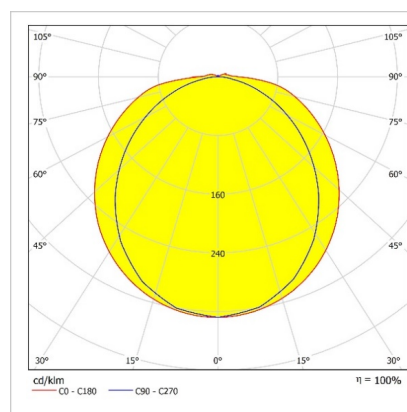
Housing	: Grey PC (high mechanical resistance, UV stability)
Diffuser	: Translucent PC with nanooptics (high mechanical resistance, UV stability)
IP Grade	: IP66
Installation	: Surface mounted
Light Source	: Mid Power LED
Electronic Control	: On/Off

### Optical & Electrical Features

Power Consumption	: 53.5 W
Final Luminous Flux	: 8643.8 lm
Efficacy	: 161.5 lm/W
Input Voltage	: 220-240 V AC
Frequency	: 50-60 Hz
Power Factor	: > 0,9
Correlated Color Temperature	: 4000K
Color Rendering Index	: >80

\* There is  $\pm 10\%$  tolerance in Technical Values

## Photometric Curve



### Other Features & Conditions

Operating Temperature Range	: -20 °C/+35 °C
Impact Resistance	: IK08
Led Life Time - L70	: > 102.000 hours @Ta= 35 °C

### Optional Features

Correlated Color Temperatures	: 3000K, 5000K , 6500K
Emergency Kit Options	: 1, 3 hours

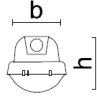
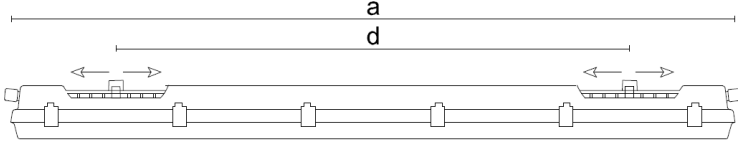
# TORNADO

Surface Mounted 52 W Etanj LED Luminaire

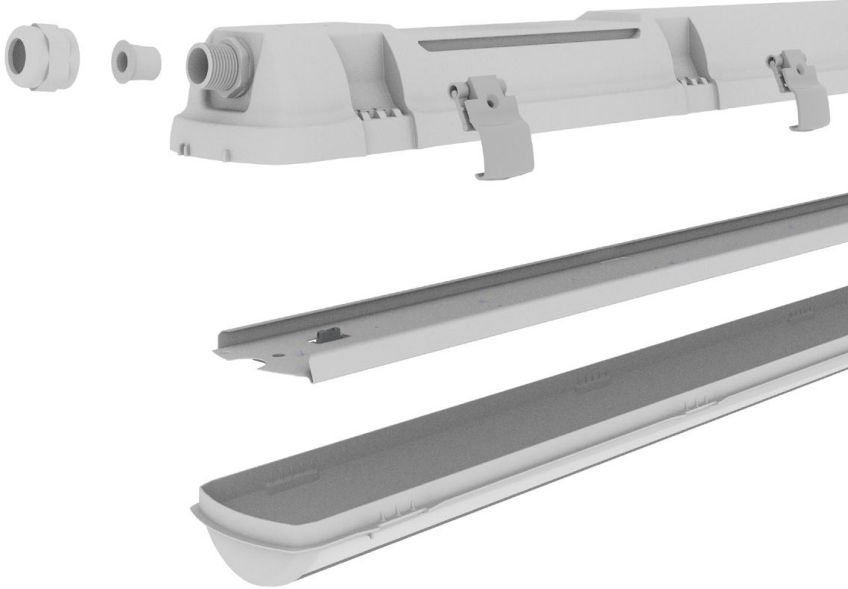
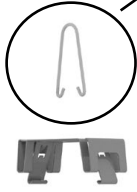
3359380 TRD 052U 40OD00 8K4 150 66 HE ELP

Dimension (mm)

	a	b	h	d
Standard	1455	98	84	970-1230



1064641: TRD ASKI TAKIM KANCASI



• EAE, reserves the right to make changes without prior notice.

**engineering the light**

**EAE Aydınlatma A.Ş.**  
İkitelli Organize Sanayi Bölgesi Eski Turgut Özal Caddesi No:20 Başakşehir / İSTANBUL-TURKEY Phone: +90 212 413 21 00 Fax: +90 212 549 37 90  
[www.eaeaydinlatma.com.tr](http://www.eaeaydinlatma.com.tr)

Revision date: 16.07.2024