



RA

46 W LED Lighting luminaire for street Lighting



Order Code : 3267000
Product Code : RA 046D 40SC00 100 6K60 CLASS II

Product Data

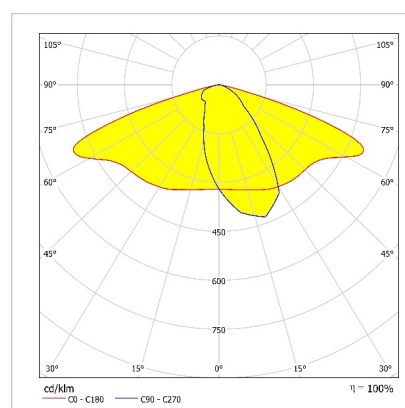
Standard Features

Housing	: SW 306G painted aluminium injection housing
Diffuser	: Tempered transparent glass
Optic	: 100° lens
IP Grade	: IP66
Installation	: Pole mounted
Light Source	: Power LED

Optical & Electrical Features

Power Consumption	: 46 W
Final Luminous Flux	: 6580 lm
Efficacy	: 143 lm/W
Input Voltage	: 220-240 V AC
Frequency	: 50-60 Hz
Power Factor	: > 0,9
Surge Transient Protection	: 4 kV
Drive Current	: 275 mA
Correlated Color Temperature	: 4000K
Color Rendering Index	: >70

Photometric Curve

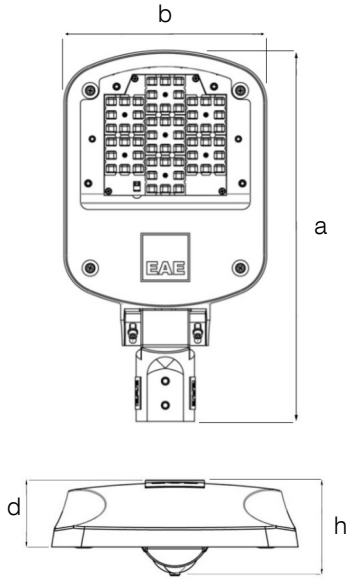


Other Features & Conditions

Operating Temperature Range	: -30 °C/+45 °C
Impact Resistance	: IK09
Led Life Time - L70	: > 102.000 saat @Ta= 45 °C
Earthing Class	: Class II

Optional Features

Correlated Color Temperatures	: 3000K, 5000K, 5700K, 6500K
DALI	: Dali, Dimko, RF, Nema, Zaga



RA

46 W LED Lighting luminaire for street Lighting

3267000 RA 046D 40SC00 100 6K60 CLASS II

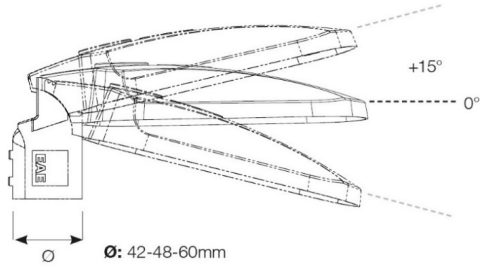
Dimensions (mm)

	a	b	h	d
Standard	460	250	105	68

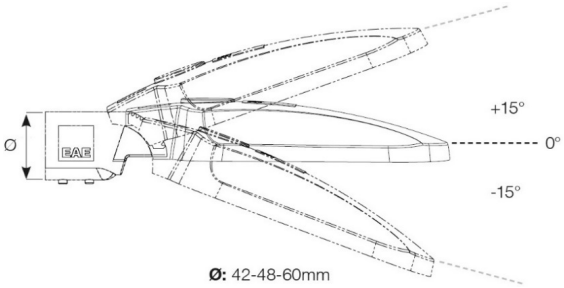
Weight (kg)

Standard	3,3
----------	-----

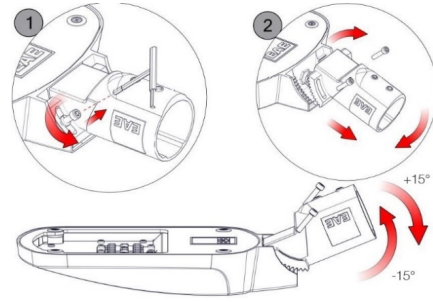
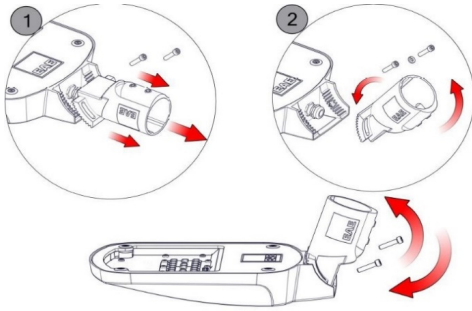
Vertical Installation Brackets



Horizontal Installation Brackets



Vertical or Horizontal Application With Same Brackets



- EAE, reserves the right to make changes without prior notice.

engineering the light

EAE Aydınlatma A.Ş.
İktisadi Organize Sanayi Bölgesi Eski Turgut Özal Caddesi No:20 Başakşehir / İSTANBUL-TÜRKİYE Phone: +90 212 413 21 00 (pbx) Fax: +90 212 549 37 90
www.eaeaydinlatma.com.tr

Revision date: 02.11.2022

