

YPL NG

Surface Mounted 30 W Etanj LED Luminaire

Order Code : 3290947
Product Code : YPL 030U 400D00 3K0 085 NG 66



Product Data

Standard Features

Housing	: Plastic Extrusion
Optic	: Opal diffuser
IP Grade	: IP66
Installation	: Surface mounted
Light Source	: Mid Power LED

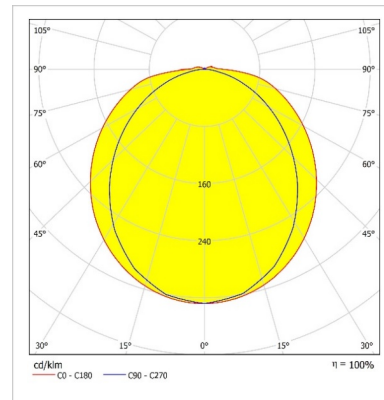
Optical & Electrical Features

Power Consumption	: 29.6 W
Final Luminous Flux	: 3013.6 lm
Efficacy	: 101.6 lm/W
Input Voltage	: 220-240 V AC
Frequency	: 50-60 Hz
Power Factor	: > 0,9
Surge Transient Protection	: 1 kV
Correlated Color Temperature	: 4000K
Color Rendering Index	: >80

Other Features & Conditions

Operating Temperature Range	: -20°C/+35 °C
Impact Resistance	: IK09
Led Life Time - L70	: > 72.000 saat @Ta= 35 °C

Photometric Curve



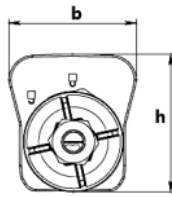
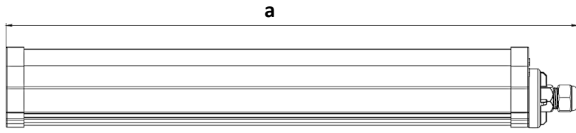
Optional Features

Correlated Color Temperatures	: 6500K
-------------------------------	---------

YPL NG

Surface Mounted 30 W Etanj LED Luminaire

3290947 YPL 030U 40OD00 3K0 085 NG 66



Dimension (mm)

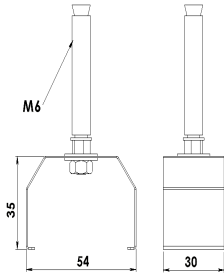
	a	b	h
Standard	853	57	57

Weight (kg)

Standard	0,9
----------	-----

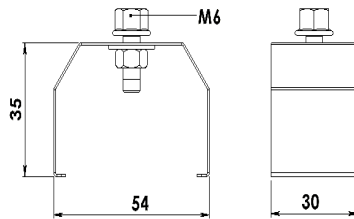


Hanger Sets and Features



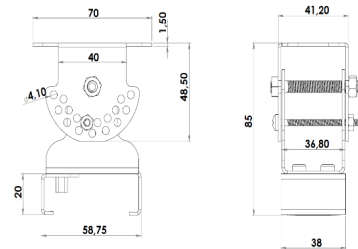
Order Code : 3243706

Product Code : Duvar Askı Takımı



Order Code : 3243707

Product Code : Tava Askı Takımı



Order Code : 3187855

Product Code : Dereceli Askı Takımı

- EAE, reserves the right to make changes without prior notice.



EAE Aydınlatma A.Ş.

İkitelli Organize Sanayi Bölgesi Eski Turgut Özal Caddesi No:20 Başakşehir / İSTANBUL-TURKEY Phone: +90 212 413 21 00 (pbx) Fax: +90 212 549 37 90

www.eaeaydinlatma.com.tr

Revision date: 07.04.2023